

# Capsule Gauge for Low Pressure

Bayonet ring case stainless steel

**MERASERW** 5

**KPCh 63**  
**KPChG 63**

## Standard Versions

Information on general and metrological features (load limits / temperature limitations) and standard pressure ranges / scale divisions can be found in model overview 6000.

### Accuracy (EN 837-3)

Class 1.6

### Case

with bayonet ring, 1.4301 (304 stainless steel)

### Case Protection Type (EN 60 529 / IEC 529)

IP 44 for model KPCh with bottom connection  
IP 54

### Case Ventilation

Model KPChG Case ventilation closable  
Ventilation required for internal pressure compensation

### Case Filling

for model KPChG: Glycerin

### Nominal Case Size

63 (mm) (2½")

### Wetted Parts

Type -1: Connection: brass  
Diaphragm capsule: CuBe-alloy  
O-ring sealing: NBR

Type -3: Connection: stainless steel 316 SS  
Diaphragm capsule: stainless steel 316 SS  
O-ring sealing: FPM

### Case Configuration

Connection: screwed  
Position of the connection: bottom connection,  
optional: centre back connection (rm)  
Mounting device: without, optional back flange for  
surface mounting (Rh) / front flange  
for panel mounting (Fr), see page 2

### Pressure Ranges (EN 837-3)

KPChg 0- 25 mbar (0-10 "WC) to 0-600 mbar (0-250 "WC)  
KPChgG 0-100 mbar (0-40 "WC) to 0-600 mbar (0-250 "WC)

### Process Connection

G ¼ B (¼" BSP)

### Window

KPCh Instrument glass for type -1  
Laminated safety glass for type -3  
Specifics for case configuration Fr  
Polycarbonate (punched for zero adjustment)

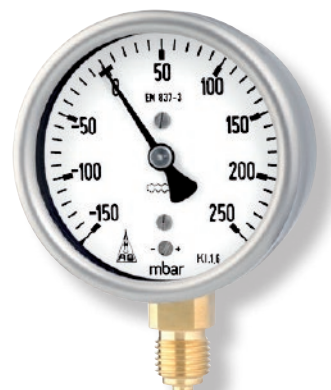
KPChG Polycarbonate (punched for zero adjustment)

### Movement

Brass / German silver for type -1  
Stainless steel for type -3

### Dial

Aluminum white, scaling black



### Pointer

Aluminum, black

### Zero Adjustment

Frontsided

## Ordering Information, Standard Pressure Ranges, Options

see pages 3 and 4

## Special Versions and Further Options Among Others

- Other process connections upon request
- Other pressure ranges and / or special scales, e.g. dual scale mbar/kPa, coloured fields or ranges, dial inscriptions, negative scale etc.
- Case parts 1.4404 (316 L stainless steel) upon request
- Increased case protection type, e.g. IP 65 upon request
- Wetted parts free of grease and oil for type -3 upon request
- Oxygen version for type -3 without case filling upon request
- Version for higher medium temperatures upon request
- Position of the connection radial at 3 o'clock, 9 o'clock, 12 o'clock (others upon request) or position of connection other than vertical installation (90°) for types without case filling
- GOST-version for Russia, Ukraine, Kazakhstan

## Accessory

see catalogue heading 11



Sales and Export South, West, North  
**ARMATURENBAU GmbH**  
Manometerstraße 5 • D-46487 Wesel-Ginderich

Subsidiary Company, Sales and Export East  
**MANOTHERM Beierfeld GmbH**  
Am Gewerbepark 9 • D-08344 Grünhain-Beierfeld

**6211**  
10/14

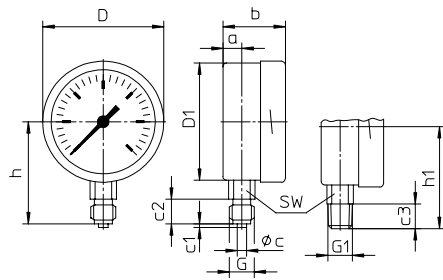
# Case Configurations, Code Letters, Dimensional Data and Weights, Blow-out Device

## Bottom Connection

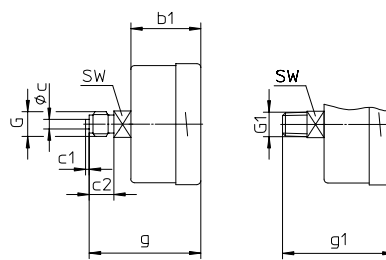
## Centre Back Connection

### no mounting device

(no additional code letter)

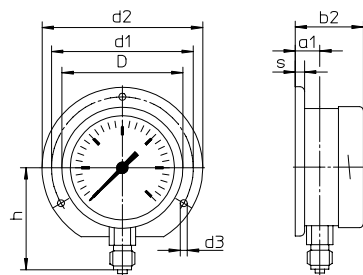


code letters: **rm**

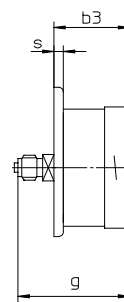


### with back flange for surface mounting

code letters: **Rh**



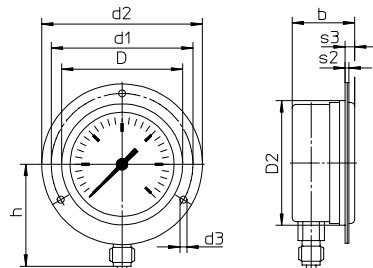
code letters: **rmRh**



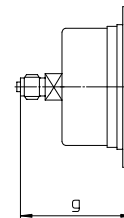
(available upon request, but according to EN-837-3 not recommended)

### with front flange for panel mounting

code letters: **Fr**



code letters: **rmFr**



(available upon request, but according to EN-837-3 not recommended)

**Front flange** for panel mounting with slotted holes, separate cover ring, recommended panel cut out:  $\varnothing 67 \pm 0.3$  mm (0.01")

## Dimensional Data (mm / inch) and Weights (kg / lb)

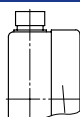
| NCS   | a        | a1        | b          | b1         | b2         | b3         | c       | c1       | c2        | c3        | D          | D1         | D2        | d1         | d2         | d3         | G                          | G1     |
|---|----------|-----------|------------|------------|------------|------------|---------|----------|-----------|-----------|------------|------------|-----------|------------|------------|------------|----------------------------|--------|
| 63 Model KPCh                               | 10<br>.4 | 13<br>.51 | 38<br>1.5  | 37<br>1.46 | 41<br>1.61 | 40<br>1.57 | 5<br>.2 | 2<br>.08 | 13<br>.51 | 13<br>.51 | 64<br>2.52 | 62<br>2.44 | 66<br>2.6 | 75<br>2.95 | 85<br>3.35 | 3.6<br>.14 | G ¼ B (¼" BSP)<br>M 12x1.5 | ¼" NPT |
| 63 Model KPChG                              | 10<br>.4 | 13<br>.51 | 47<br>1.85 | 37<br>1.46 | 50<br>1.97 | 40<br>1.57 | 5<br>.2 | 2<br>.08 | 13<br>.51 | 13<br>.51 | 64<br>2.52 | 62<br>2.44 | 66<br>2.6 | 75<br>2.95 | 85<br>3.35 | 3.6<br>.14 | G ¼ B (¼" BSP)<br>M 12x1.5 | ¼" NPT |
| 10-times üs<br>63 Model KPCh<br>Model KPChG | 10<br>.4 | 13<br>.51 | 47<br>1.85 | 47<br>1.85 | 50<br>1.97 | 50<br>1.97 | 5<br>.2 | 2<br>.08 | 13<br>.51 | 13<br>.51 | 64<br>2.52 | 62<br>2.44 | 66<br>2.6 | 75<br>2.95 | 85<br>3.35 | 3.6<br>.14 | G ¼ B (¼" BSP)<br>M 12x1.5 | ¼" NPT |

| NCS  | g          | g1         | h <sup>±1</sup> | h1 <sup>±1</sup> | s       | s1       | s3         | SW        | approx. weight <sup>1)</sup> |
|--|------------|------------|-----------------|------------------|---------|----------|------------|-----------|------------------------------|
| 63 Model KPCh                              | 60<br>2.36 | 60<br>2.36 | 54<br>2.13      | 54<br>2.13       | 5<br>.2 | 2<br>.08 | 5.5<br>.22 | 14<br>.55 | 0.2 / 0.44                   |
| 63 Model KPChG                             | 60<br>2.36 | 60<br>2.36 | 54<br>2.13      | 54<br>2.13       | 5<br>.2 | 2<br>.08 | 5.5<br>.22 | 14<br>.55 | 0.26 / 0.57                  |
| 10-fold üs<br>63 Model KPCh<br>Model KPChG | 70<br>2.76 | 70<br>2.76 | 54<br>2.13      | 54<br>2.13       | 5<br>.2 | 2<br>.08 | 5.5<br>.22 | 14<br>.55 | 0.21 / 0.46<br>0.26 / 0.57   |

<sup>1)</sup> Information for version without mounting device

## Blow-out Device

Model KPChG  
Case ventilation  
no. 26 closable



## Ordering Information with Standard Pressure Ranges, Options

| Basic Model:        |                                  | Capsule Gauge for Low Pressure, Bayonet Ring Case |                |                 | KPCh                         |              |                   |
|---------------------|----------------------------------|---|----------------|-----------------|------------------------------|--------------|-------------------|
| Case filling:       | without                          |   |                |                 | no code letters              |              |                   |
|                     | glycerin                         |   |                |                 | <b>G</b>                     |              |                   |
| Nominal case size:  | case- Ø 63 (mm) (2½")            |   |                |                 | <b>63</b>                    |              |                   |
| Wetted material:    | copper alloy                     |   |                | - 1             |                              |              |                   |
|                     | stainless steel                  |   |                | - 3             |                              |              |                   |
| Case configuration: | case / connection                | screwed   |                |                 | no code letters              |              |                   |
|                     | position of the connection       | bottom<br>centre back                             |                |                 | no code letters<br><b>rm</b> |              |                   |
| mounting device     | without                          |   |                | no code letters |                              |              |                   |
|                     | back flange for surface mounting |   |                | <b>Rh</b>       |                              |              |                   |
|                     | front flange for panel mounting  |   |                | <b>Fr</b>       |                              |              |                   |
| Pressure ranges:    | mbar                             |   |                | inchWC          |                              |              |                   |
|                     | Vacuum                           | Compound ranges                                   | Pressure       | Vacuum          | Compound ranges              | Pressure     |                   |
|                     | -25 - 0                          | -10 - 15<br>-15 - 10                              | 0 - 25         | 10 - 0          | -4 - 6<br>-6 - 4             | 0 - 10       |                   |
|                     | -40 - 0                          | -15 - 25<br>-25 - 15                              | 0 - 40         | -16 - 0         | -6 - 10<br>-10 - 6           | 0 - 16       |                   |
|                     | -60 - 0                          | -20 - 40<br>-40 - 20                              | 0 - 60         | -25 - 0         | -10 - 15<br>-15 - 10         | 0 - 25       |                   |
|                     | -100 - 0                         | -40 - 60<br>-60 - 40                              | 0 - 100        | -40 - 0         | -15 - 25<br>-25 - 15         | 0 - 40       |                   |
|                     | -160 - 0                         | -60 - 100<br>-100 - 60                            | 0 - 160        | -60 - 0         | -20 - 40<br>-40 - 20         | 0 - 60       |                   |
|                     | -250 - 0                         | -100 - 150<br>-150 - 100                          | 0 - 250        | -100 - 0        | -40 - 60<br>-60 - 40         | 0 - 100      |                   |
|                     | -400 - 0                         | -150 - 250<br>-250 - 150                          | 0 - 400        | -160 - 0        | -60 - 100<br>-100 - 60       | 0 - 160      |                   |
|                     | -600 - 0                         | -200 - 400<br>-400 - 200                          | 0 - 600        | -250 - 0        | -100 - 150<br>-150 - 100     | 0 - 250      |                   |
|                     |                                  |   |                |                 |                              |              | e.g. 0 - 160 mbar |
|                     | Process connection:              | standard thread                                   | G ¼ B (¼" BSP) |                 |                              | <b>G ¼ B</b> |                   |
| options:            |                                  | ¼" NPT  |                |                 | <b>¼" NPT</b>                |              |                   |
|                     |                                  | M12x1.5   |                |                 | <b>M 20x1.5</b>              |              |                   |
|                     |                                  | G ⅜ B (⅜" BSP)                                    |                |                 | <b>G ⅜ B</b>                 |              |                   |
|                     |                                  | ⅜" NPT  |                |                 | <b>⅜" NPT</b>                |              |                   |
|                     |                                  | M10x1   |                |                 | <b>M10x1</b>                 |              |                   |
| Options:            | see page 4                       |   |                |                 |                              |              |                   |

Example:

KPCh 63 - 1, 0 - 160 mbar, G ¼ B

## Further Options regarding Ordering Information

| Basic Model: Capsule Gauge for Low Pressure, Bayonet Ring Case |   | KPCh                                  |
|--|---|---------------------------------------|
| Model Code:  |   | see page 3                            |
| Options:   | <p>red mark on the dial</p> <p>stationary on the dial,</p> <p>red pointer adjustable when removable ring</p> <p>stationary adjusting mechanism brass, nickelplated</p> <p>red pointer screwed with window</p> <p style="text-align: right;">adjustable externally removable key</p> <p style="text-align: right;">non-removable key</p> <p>adjusting mechanism stainless steel</p> <p>screwed with window</p> <p style="text-align: right;">adjustable externally removable key</p> <p style="text-align: right;">non-removable key</p> <p>maximum adjusting mechanism brass, nickelplated</p> <p>drag indicator screwed with window</p> <p>measuring span 160 mbar and above adjustable externally removable key</p> <p style="text-align: right;">non-removable key</p> <p>clockwise rotary pointer adjusting mechanism stainless steel</p> <p>motion; for vibration-free application screwed with window</p> <p style="text-align: right;">adjustable externally removable key</p> <p style="text-align: right;">non-removable key</p> <p>special adjustment</p> <p>case ventilation no. 22 for outdoor installation<sup>1)</sup></p> <p>case polished</p> <p>bayonet ring polished</p> <p>silicone-free version</p> <p>restrictor screw in orifice Ø 0.3 mm (0.01")</p> <p>pressure inlet port</p> <p>material: as process connection, brass or stainless steel</p> <p><b>overrange protection (üs) and / or low pressure protection (us)<sup>2)</sup></b></p> <p>for types <b>-1</b> 3-fold üs<sup>3)</sup> or us</p> <p>(copper alloy) 10-fold üs from 0 – 25 mbar</p> <p>10-fold us from -100 – 0 mbar</p> <p>combination 10-fold üs and 10-fold us</p> <p>only for compound ranges for spans 100 mbar (40 "WC) and above</p> <p>for types <b>-3</b> 3-fold üs<sup>3)</sup> or us</p> <p>(stainless steel) 10-fold üs from 0 – 25 mbar</p> <p>10-fold us from -100 – 0 mbar</p> <p>combination 10-fold üs and 3-fold us</p> <p>only for compound ranges for spans 40 mbar (16 "WC) and above</p> <p>measuring point with stainless steel plate 12 mm x 55 mm (0.47" x 2.17"), wire mounting</p> <p>marking or sticker on the case coverage</p> | (order at present still in cleartext) |

### Special Versions: Please describe your requirements in cleartext

<sup>1)</sup> only for version -1 and span 100 mbar and above

<sup>2)</sup> max. - 1000 mbar

<sup>3)</sup> only for dry versions